

This was a several week saga, figuring all this out. I didn't find much in the way of good advice on our friend the Internet, so I thought I would write this (partly so that I can remember how whenever the next software upgrade comes out, and partly for others who are having trouble or want to avoid trouble). No guarantees it will work for you, but it does for me, and here's exactly how (with pictures and everything).

The hard part was getting the USB-to-Serial Adapter to work with Virtual PC. Most of this is a how-to for that.

### **Hardware:**

Apple Mac PowerBook 17", 1 Ghz, with 1 GB of RAM

USB-to-Serial Adapter: Keyspan USA-19HS

SN10B Cable: Ilec PC Cable, as supplied with the instrument

WARNING: Don't listen to the "Experts" at your gliderport who will tell you that a regular crossover Serial cable will work, and when it doesn't then you must use a straight through cable, and when that doesn't work...etc. I think I have learned this lesson without damage to either the SN10B or the computer, but you might not be so lucky, as Dave Nadler tells me that damage HAS resulted from this scenario.

### **Software:**

Mac OS X, 10.4.3

Virtual PC, Connectix Corporation (now absorbed by Micro\$oft), v 6.0, running Windows 2000 Pro.

Drivers for the Serial Adapter, from the Keyspan website

Windoze: <http://www.keyspan.com/products/usb/usa19HS/downloads/win/>

Macintosh: <http://www.keyspan.com/support/macosx/usa/>

Latest version of SN10B software (as of now it is 2.31):

<http://www.ilec-gmbh.com/software.htm>

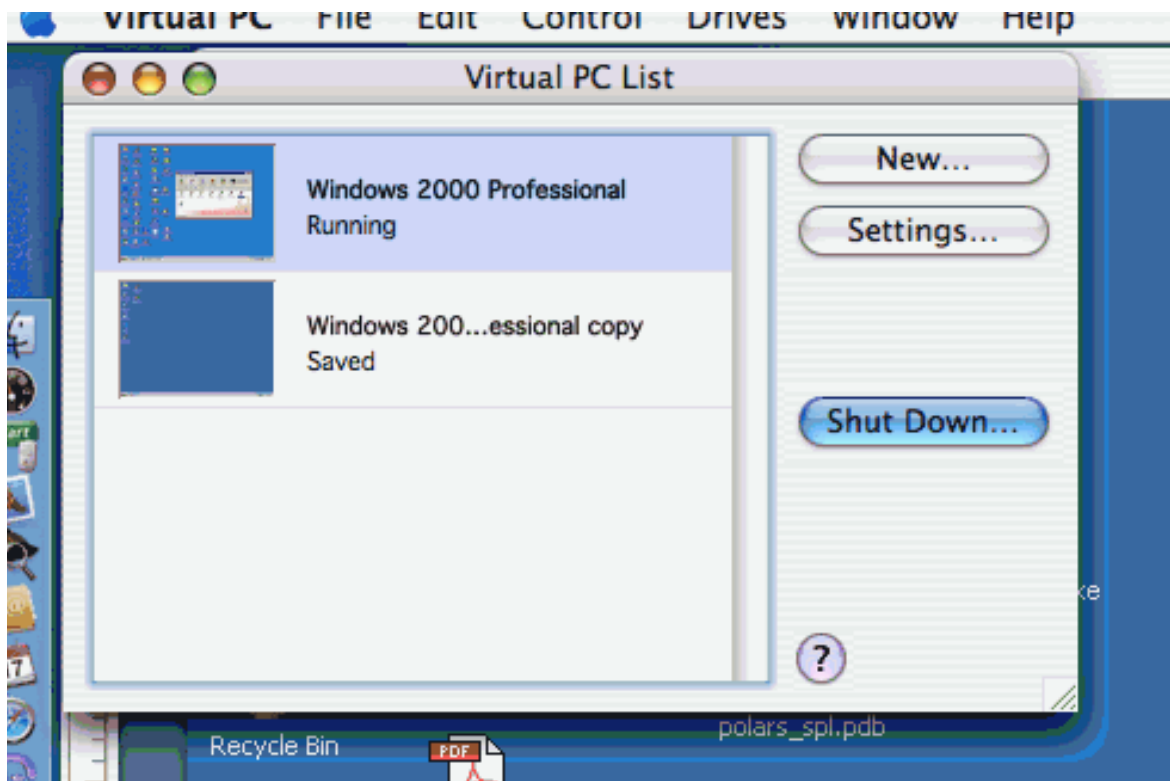
Make sure you are using the correct version for your instrument! SN10 gets version 2.31, and SN10B gets 2.31B (as of this writing).

### **Setup: You should only have to do this once.**

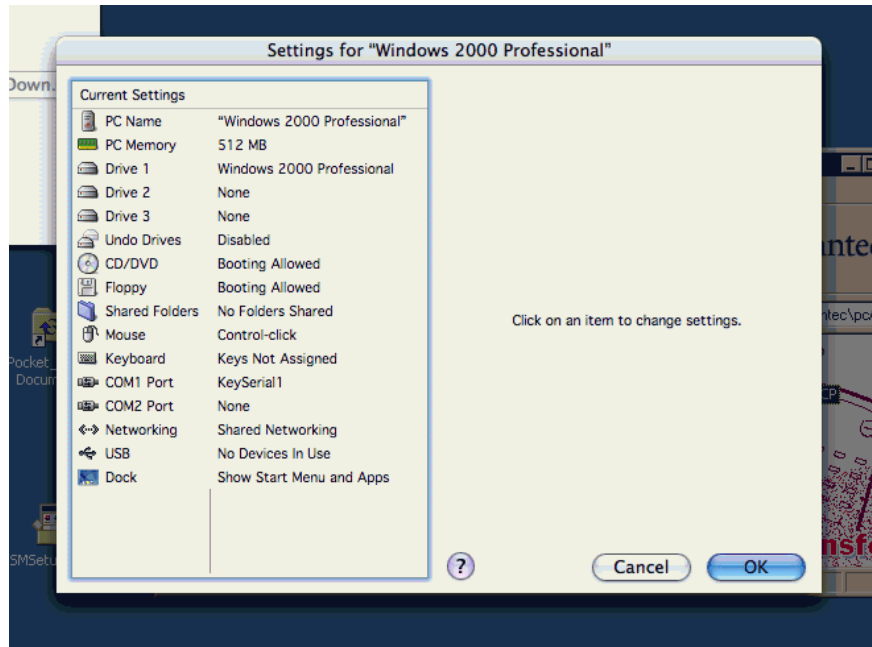
1. Install Macintosh Keyspan drivers.
2. Start Virtual PC.
3. Install Windows Keyspan drivers (these can be copied to the virtual machine from the Mac side, or downloaded directly into virtual PC via Internet Explorer).
4. Install the most current versions of Ilec software, as well as Waypoint and SUA files in C:/SN10, within Virtual PC.
5. Shut down (not "save state") your virtual Windows machine. After the initial restart from this shut down, you should be able to use "save state" from then on, if you prefer.

**Each time you use the USB-to-Serial Adapter do these steps:**

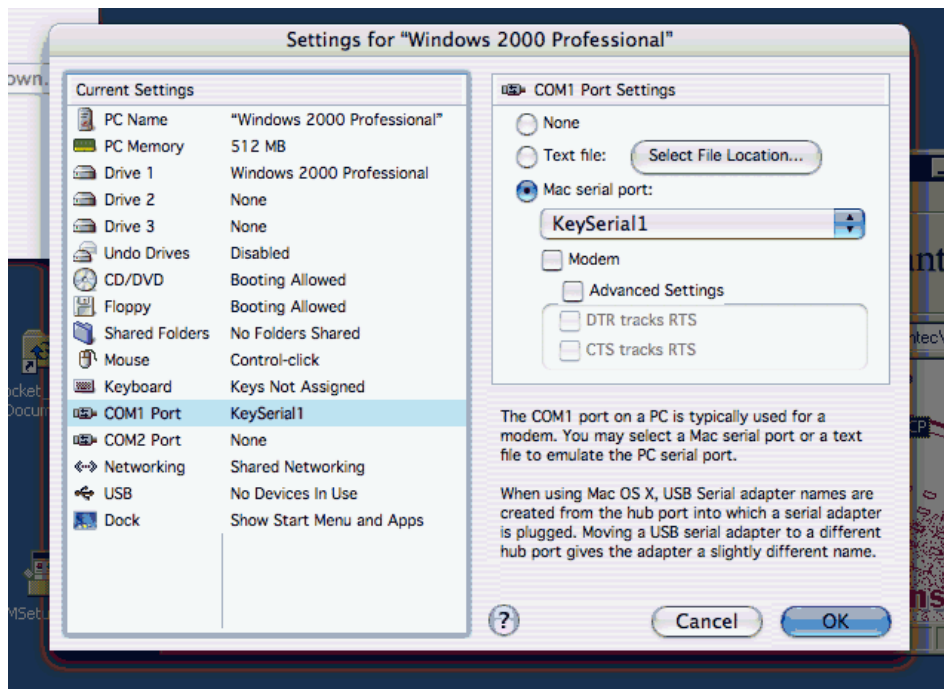
1. With the Mac running but Virtual PC either shut down or in a saved state, plug in the USB-to-Serial Adapter. Only the adapter is important, you need not have the SN10B (or whatever else will be ultimately connected to it), just the cable itself.
2. Start up Virtual PC, and in the “Virtual PC List”, select “Settings” for the machine you intend to use to communicate with the SN10B. If you start from a “saved state” you will have to wait until the restoration is complete before you can access the settings option.



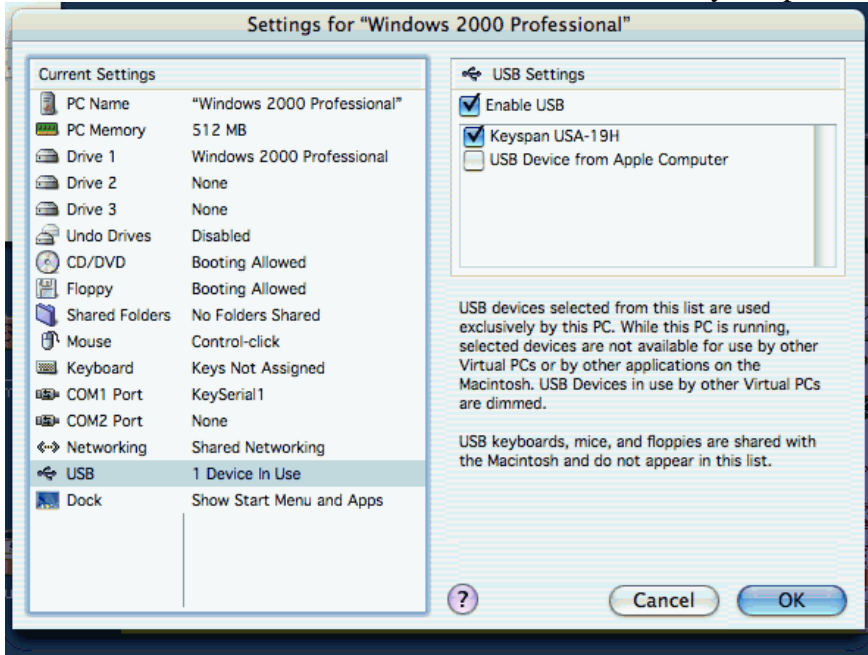
Clicking on “settings” should get you this screen:



Select “COM1 Port” and confirm that Mac serial port is selected, and that KeySerial1 is selected in the dropdown menu below Mac serial port. Click on “OK”. I have found these selections to be persistent, and usually stay this way, but I confirm it every time.



Reopen the Settings window (it will have closed after clicking OK in the COM1 Port screen). Then select USB in the same settings screen. Check the box "Enable USB" if it is unchecked, and then check the box "Keyspan USA-19H". I find that every time I restart VPC I have to recheck this box. This is definitely not persistent.



Then click OK, and the settings screen will close. You should now be left with a Mac running VPC, which has a USB-to-Serial Adapter installed and ready to use.

At this point you can use it for SN10 sync, or Microsoft Active-Sync for use with your PDA, or ready to talk to your Volkslogger, or whatever.

#### AT THE AIRCRAFT:

From here it is pretty much as per the SN10B manual:

You've got a running laptop PC (with an Apple logo on the case), a working USB-to-Serial adapter, the correct Ilec software installed in C:/SN10, and your favorite waypoint and SUA files in the same place.

Start the SN10, go into setup mode, and page over to the "Site Select" page.

Pick which site you wish to update, #1 or #2.

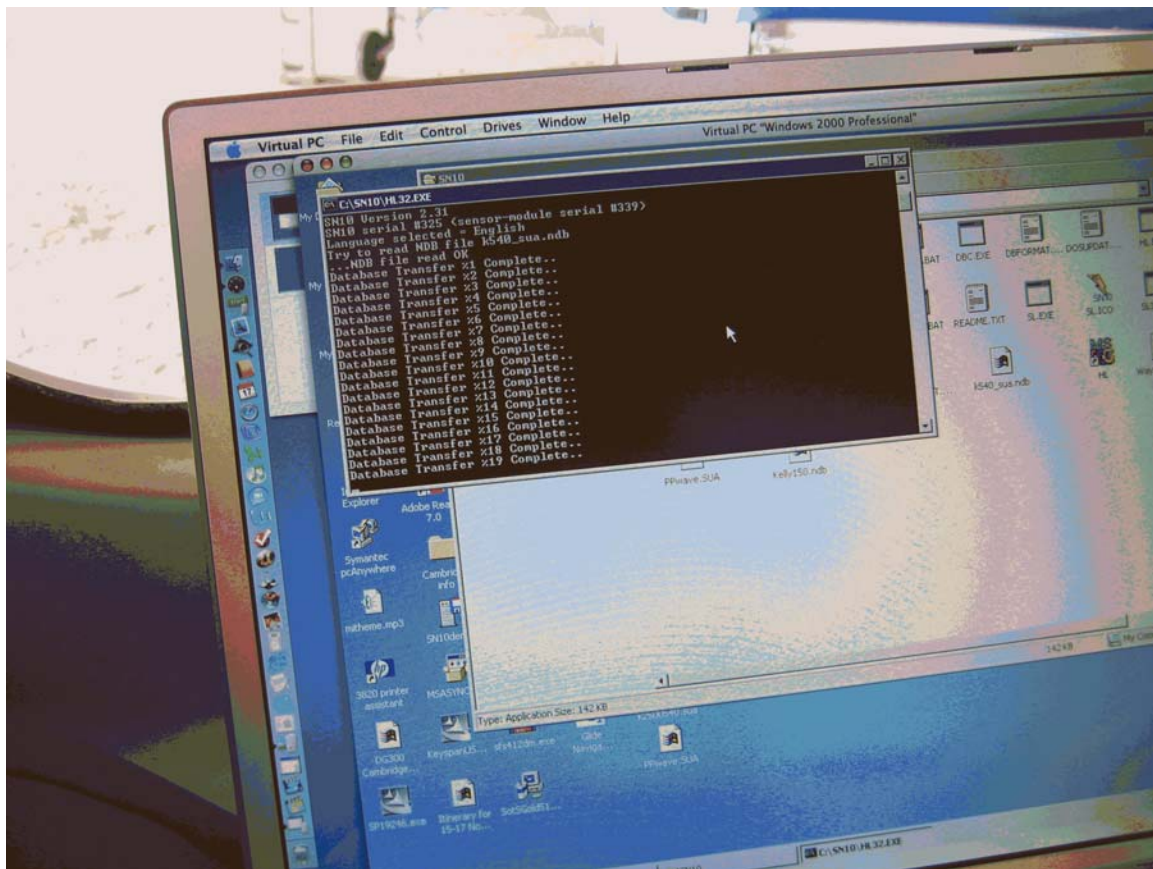
Connect the Ilec PC Cable between the USB-to-Serial Adapter and the serial port connected to the SN10B, as in this picture.



You have the most current version of Ilec software installed in C:/SN10, as per the Manual's instructions. Navigate there, and double click on HL32.exe.

At this point the SN10 takes over, and you use its controls to operate the process. Respond to the prompts, and use the cursor to select the file you wish to install. Then press the enter key, and the transfer begins.

You can monitor the progress of the transfer on the SN10, or on the Virtual PC screen:



Once the transfer is complete, follow the prompts on the SN10 screen to stop PCLink, disconnect everything, and go fly!